

POINT OF BEGINNING  
NORTH WEST POINT  
CORNER OF SECTIONS 7 & 8

etal S-14080

3. George S Petersen Family LLC  
s-34014

APPROXIMATE LOCATION OF SPRINGS,  
ROADS-EXISTING & FUTURE, THESE ARE  
NOT TO SCALE.

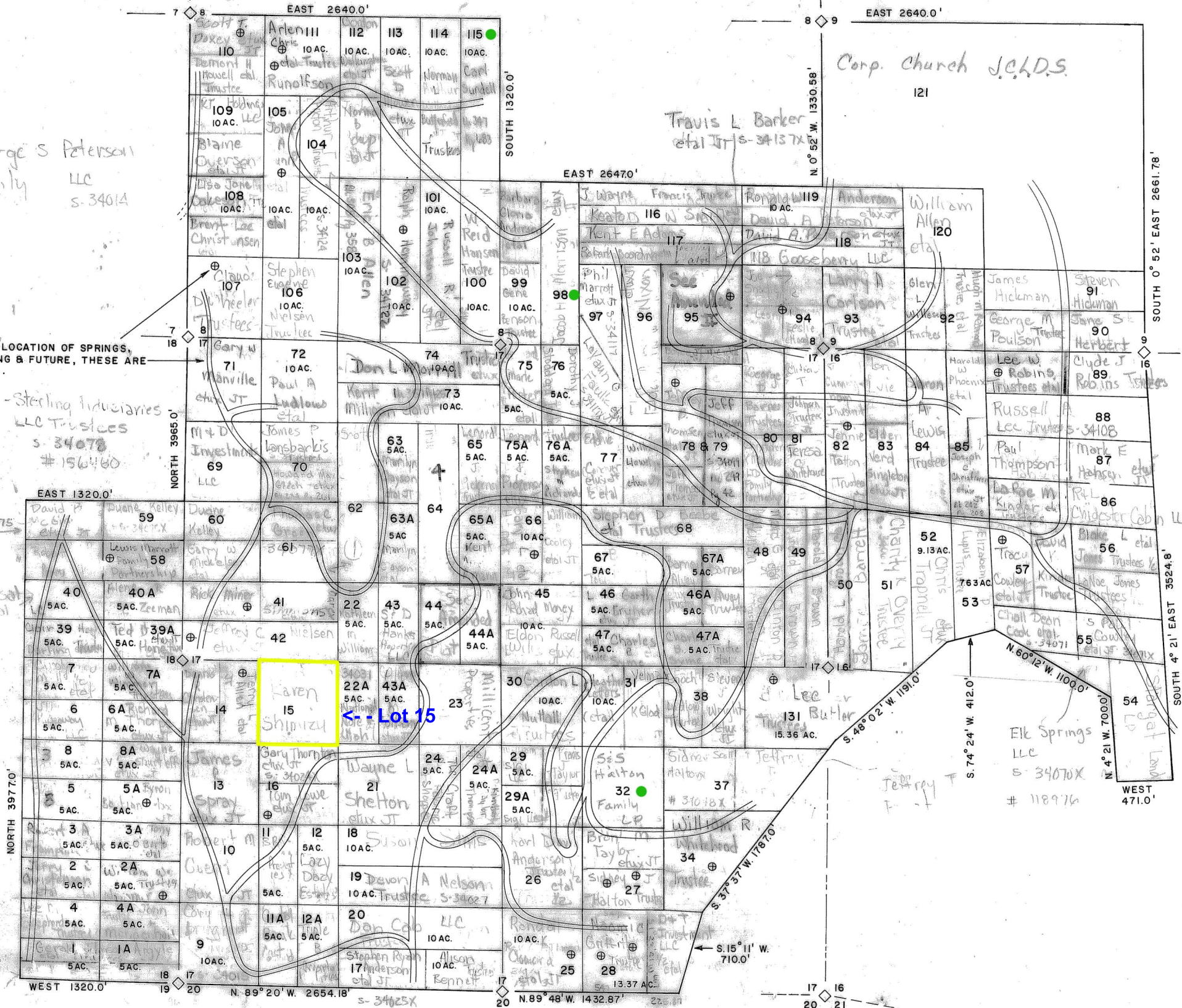
1-Sterling Induciaries LLC Trustees  
s-34078  
#156460

Corp. Church J.C.H.D.S.  
121

Travis L. Barker etal JT s-34137X

s-34075  
Universal Capital

Elk Springs LLC  
s-34070X  
#118976



Lot 15

SOUTH 0° 52' EAST 2661.78'  
SOUTH 4° 21' EAST 3524.8'

WEST 1320.0' NORTH 3977.0' WEST 471.0' NORTH 89° 20' W. 2654.18' NORTH 89° 48' W. 1432.87' NORTH 5° 15' 11" W. 710.0' NORTH 60° 12' W. 1100.0' SOUTH 74° 24' W. 412.0' SOUTH 5° 48' 02" W. 1191.0' SOUTH 3° 37' 37" W. 1178.70'